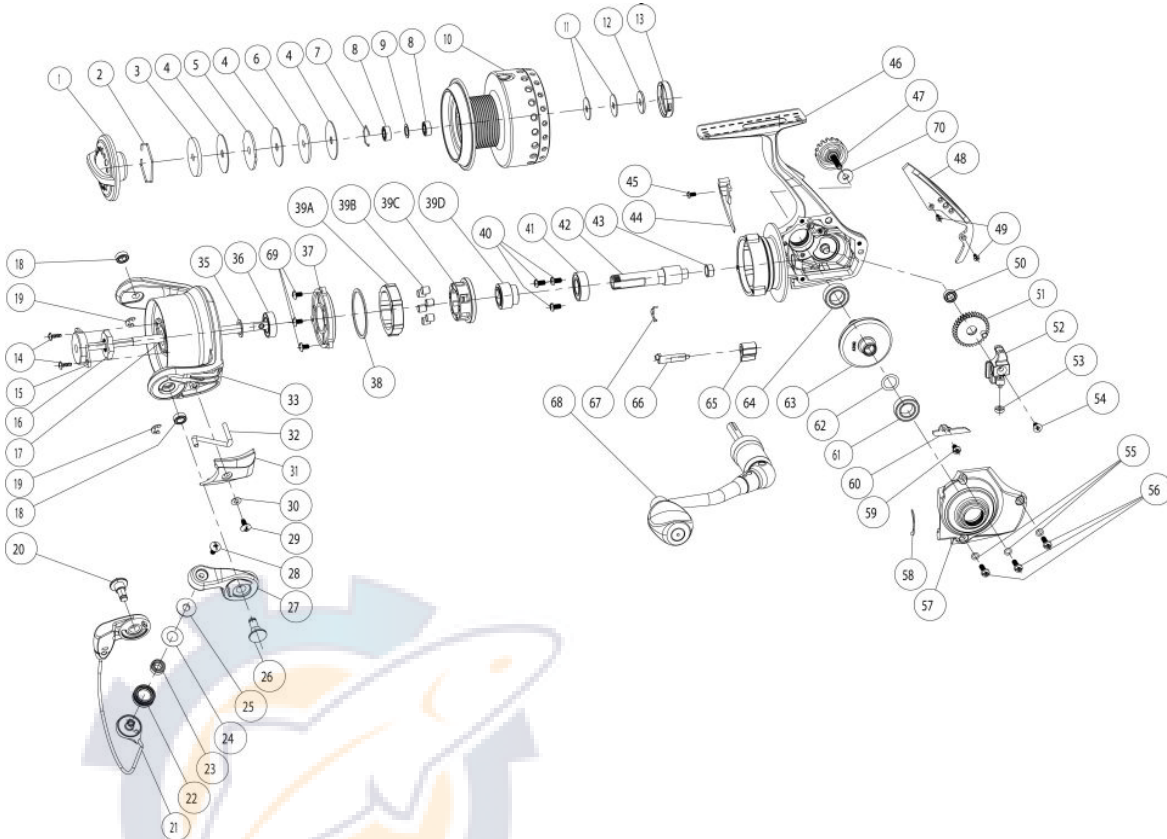


QUANTUM

Catalyst PT

CT40PTIB



Quantum Energy CT40PTIB Spinning Reel Part List

| Key # | Description | Part No. | Key # | Description | Part No. |
|-------|--------------------------------------|-----------|-------|---------------------------|----------|
| 1 | DRAG KNOB ASSEMBLY | SG332-03 | 38 | WASHER | PG069-01 |
| 2 | DRAG WASHER RETAINER | RQ038-01 | 39 | CLUTCH ASSEMBLY | RG463-01 |
| 3 | DRAG WASHER "D" | SQ080-01 | 39-A | CLUTCH LOCK RING | N/A |
| 4 | DRAG WASHER "B" (Only 1 for 10 SIZE) | RQ033-01 | 39-B | CLUTCH ROLLER | N/A |
| 5 | DRAG WASHER "A" | PG081-02 | 39-C | CLUTCH ROLLER RETAINER | N/A |
| 6 | DRAG WASHER "C" | RQ080-03 | 39-D | CLUTCH SLEEVE | N/A |
| 7 | SPOOL BALL BEARING RETAINER | HV080-01 | 40 | PINION BALL BEARING SCREW | TK057-01 |
| 8 | SPOOL BALL BEARING | GH202-01 | 41 | PINION BALL BEARING | UK028-01 |
| 9 | WASHER | RG080-01 | 42 | PINION | RG011-01 |
| 10 | SPOOL ASSEMBLY | RG320-03 | 43 | PINION BUSHING | SQ141-03 |
| 11 | SPOOL ADJUST WASHER | PG030-01 | 44 | TRIP BUMPER | XP119-01 |
| 12 | SPOOL WASHER | PG080-01 | 45 | TRIP BUMPER SCREW | AT136-01 |
| 13 | SPOOL CLICK ASSEMBLY | PG4114-01 | 46 | BODY ASSEMBLY | N/A |
| 14 | ROTOR NUT LOCK SCREW | RQ094-01 | 47 | HANDLE SCREW ASSEMBLY | TK373-01 |
| 15 | MAIN SHAFT BUSHING | SQ214-01 | 48 | BODY REAR CAP | SG250-01 |
| 16 | ROTOR NUT | TH006-01 | 49 | BODY REAR CAP SCREW | PG107-01 |
| 17 | MAIN SHAFT | RG015-02 | 50 | O/S GEAR BALL BEARING | CT157-01 |
| 18 | ROTOR BUSHING | PG158-01 | 51 | O/S GEAR ASSEMBLY | TQ353-01 |
| 19 | E- CLIP | GH034-01 | 52 | O/S SLIDER ASSEMBLY | RG325-01 |
| 20 | PIN | QG042-02 | 53 | O/S SLIDER BUSHING | PG227-01 |
| 21 | BAIL ASSEMBLY | RG347-04 | 54 | MAIN SHAFT SCREW | RQ100-01 |
| 22 | LINE ROLLER | DH004-02 | 55 | SIDE COVER SCREW WASHER | RQ142-01 |
| 23 | LINE ROLLER BALL BEARING | GH202-01 | 56 | SIDE COVER SCREW | RQ057-01 |
| 24 | LINE ROLLER WASHER | DH102-01 | 57 | SIDE COVER ASSEMBLY | RG323-04 |
| 25 | LINE ROLLER COLLAR | CH102-01 | 58 | PAD | PG140-01 |
| 26 | PIN | PG042-02 | 59 | O/S SLIDER RETAINER SCREW | TK057-01 |
| 27 | ARM LEVER ASSEMBLY | RG307-04 | 60 | O/S SLIDER RETAINER | RG078-01 |
| 28 | LINE ROLLER SCREW | AQ108-02 | 61 | SIDE COVER BALL BEARING | BL157-01 |
| 29 | ARM LEVER COVER SCREW | GU077-03 | 62 | DRIVE GEAR ADJUST WASHER | RG105-02 |
| 30 | ARM LEVER COVER WASHER | SQ142-01 | 63 | DRIVE GEAR | SQ012-01 |
| 31 | ARM LEVER COVER | RG087-01 | 64 | BODY BALL BEARING | BL157-01 |
| 32 | KICK LEVER | RG019-01 | 65 | STOPPER LEVER | RG059-01 |
| 33 | ROTOR ASSEMBLY | N/A | 66 | STOPPER CAM | TK090-01 |
| 34 | RETAINER RING | N/A | 67 | STOPPER CAM SPRING | TK089-01 |
| 35 | ROTOR ADJUST WASHER | PG105-04 | 68 | HANDLE ASSEMBLY | SG318-01 |
| 36 | CLUTCH RETAINER BALL BEARING | BL157-01 | 69 | CLUTCH RETAINER SCREW | TV053-01 |
| 37 | CLUTCH RETAINER | RG060-01 | 70 | HANDLE SCREW WASHER | TH105-01 |